

ASCE Newsletter

Central Ohio Section

February, 2016
Volume 20, Issue 5

CONTENT

President's Letter 2

Latest News 2-7

Calendar of Events 7

Newsletter Ads 8-9

STEM Expo Flyer 10

Spring Seminar 11

Pay Securely
Online On Our
Web Site



FEBRUARY E-WEEK LUNCHEON



DATE: Thurs. Feb.. 25, 2016, 11:15 A.M. Registration, 12:00 P.M. Lunch

LOCATION: Villa Milano, 1630 Schrock Rd., Columbus OH

TOPIC: Valravn - Building a World Record Breaking Roller Coaster

Mr. Rob Decker will uncover a behind the scenes look at what it takes to design and build the world's TALLEST, FASTEST, and LONGEST dive coaster

SPEAKER: Rob Decker - Sr. Vice President of Planning and Design, Cedar Fair Entertainment Co.

MENU: Meat Lasagna, Vegetarian lasagna, or Chicken Piccata

COST: \$25 in advance, \$35 walk-ins

REGISTER: Registration is due by Monday, Feb. 22, 2016. Late registrations and walk-ins may not be accepted. Food is not guaranteed. Registration fees are non-refundable. Register and pay online at: www.wtsevents.org/chapter/Columbus.



2015-2016 BOARD OF DIRECTORS

PRESIDENT
Carlos Vazquez
(614) 634-7132

TREASURER
Christopher Nye
(614) 793-2226

1ST VICE PRESIDENT
AJ Smith
(800) 241-7173

**MEMBER-AT-LARGE /
NEWSLETTER EDITOR**
Brooks Vogel
(614) 487-1650

2ND VICE PRESIDENT
Firat Sever
(614) 901-2235

SECRETARY
Matt Baxendell
(614) 839-0250

WEB SITE EDITOR
Peter Narsavage
(614) 432-4030

LETTER FROM THE PRESIDENT

Central Ohio Section Members:

Jim Barna, Ohio Department of Transportation (ODOT) Assistant Director of Transportation Policy and Chief Engineer was the feature speaker of January's meeting. He spoke about ODOT's 2015 accomplishments, 2016 initiatives, and future programs. Thanks Jim for sharing ODOT's plans. It certainly reinforced the agency part in charting Ohio's economic wellbeing through a safe, reliable, and cost-effective transportation infrastructure.

The last week of February is Engineers week (<http://www.discover.org/>). It is a community celebration of engineering and its role in society. It's also an opportunity to engage students and bring awareness to engineering careers. Today I want to bring to your attention some of the outreach activities Central Ohio ASCE is involved and how you can participate.

Every year several Central Ohio Engineering societies get together to plan activities celebrating Engineering. This year's planning committee included members of ABCD, ACEC, ASCE, ASHE, ASHRAE, ECC, IEEE, ITE, OSPE, and WTS (chair this year). Mark Seidelmann, 2014-2015 Central Ohio ASCE Section President, represented us. The main event for E-week is the annual luncheon. My favorite part of this luncheon? We invite local high school students to join us. Event organizers mix students and engineers at

each table to network. We get to talk about what we do, about their interests and aspirations. Refer to the cover page of this newsletter for more information.

Don't forget to volunteer or just bring your kids to Central Ohio ASCE's 3rd Annual STEM Expo to be held on Saturday, March 5, 2016 at Thomas Worthington High School from 9 AM to 1 PM. Visit our [STEM Expo page](#) for details.

In the spring, Central Ohio ASCE sponsors a "Civil Engineering Career Day" to introduce high school juniors to Civil Engineering as a career. More detail to come as we approach the date.

How about the rest of the year? How can you help? If you are interested to talk about engineering to your kid or grandkid's school or scout troop, we can help with hand-on activities instructions and some materials. Contact us if you are interested.

Looking forward to meet you at one of our events.

Sincerely,

Carlos Vazquez, PE, M. ASCE

President

ASCE Central Ohio Section

president@centralohioasce.com



2016 STEM EXPO

What: 2016 STEM Expo
When: Sat. March 5, 2016, 9:00 AM-1:00 PM
Where: Thomas Worthington High School
300 W. Dublin-Granville Road,
Worthington OH 43085

See Flyer at the end of this newsletter

After much success in 2014 and 2015, the ASCE Central Ohio Section Younger Member Group is hosting a STEM (Science, Technology, Engineering, Math) Expo to conclude Engineer's Week. The Younger Member Group is seeking local STEM companies to sponsor hands-on, STEM related activities for the event. The goal is to expose K-8 students to the world of STEM through fun, interactive activities.

Rather than seek monetary sponsorship, we invite local STEM professionals to organize an activity on behalf of their employer.

Sponsoring an activity is an easy and great way to get involved in this educational and outreach event. Activity sponsor

responsibilities would include:

- Developing a fun, interactive STEM related activity
- Obtaining funding through your employer for the activity materials, if necessary
- Facilitating the activity at the STEM Expo event (typically 2-3 people are needed)

Information for the event, including a list of sponsors and the planned activities can be found at <http://www.centralohioasce.com/STEM-Expo>

Please help us make this a great community event.



CIVIL ENGINEERING ACHIEVEMENT AWARD

Ohio Outstanding Civil Engineering Achievement Award Criteria

The Ohio Council of ASCE is soliciting nominations for the 2016 Ohio Outstanding Civil Engineering Achievement Award (OCEA). Selection criteria for the Ohio OCEA Award parallels national ASCE's criteria except that nominated projects must be located within Ohio's borders. Projects nominated for but not winning the national ASCE



OCEA competition are eligible. Ohio Council's OCEA winner will be selected by a committee of judges representing each Ohio Section. The award is given annually to a Civil Engineering project, not an individual or firm, to recognize the contribution of the many engineers who have worked on the project.

Selection is based on how the project demonstrates the application of civil engineering skills and its contribution to civil engineering progress and mankind. Judges will consider the following criteria: (1) contribution to the well-being of people and communities, (2) resourcefulness in planning and in the solution of design problems, (3) pioneering use of materials and methods, (4) innovations in construction, and (5) impact on the physical environment, unusual aspects, and aesthetic values. The judges will also

consider the project's potential adverse effects. The nomination should look frankly at the project's potential problems, technical and otherwise.

A bronze plaque will be awarded to the winning Ohio Project to be mounted in a prominent location at the project site. The presentation ceremony will provide an excellent opportunity for publicity and recognition.

Guidelines for Eligibility

Projects must generally be substantially completed and operating for their intended purpose to be considered for the award. Most any civil engineering project is open for consideration. Detailed guidelines are available on the website link below.

Submittals

The submittal deadline is 5:00 PM, Monday, March 7, 2016. For additional information please visit the Ohio Council of Section's website [HERE](#).



2017 ASCE NATIONAL PRESIDENT-ELECT NOMINEES

For the first time, ASCE members will choose from two women for the 2017 President Elect. Get to know the candidates better [HERE](#).

Robin A. Kemper, P.E., LEED AP, F.SEI, F.ASCE, is a senior risk engineering consultant for Zurich Services Corporation in New York. She provides investigation of and technical support for major construction claims and develops best practices for consulting design processes for both the professional liability and construction properties risk engineering groups. Kemper is ASCE's liaison with the New Jersey Society of Professional Engineers and an ASCE representative with Engineers Without Borders USA. She has served in several Society leadership positions including Region 1 Director and New Jersey Section President. She also has chaired several ASCE committees, including the Member Communities Committee, EWB Task Committee 3, and the Region 1 Formation Team.

In the official vision statement she submitted for her nomination, Kemper stressed a need to elevate the civil engineering profession as a whole: "We are professionals! It is our obligation to ensure the health, safety, and welfare of the public. To differentiate ourselves from others who claim to be qualified to perform our work, we need to continually increase our education, knowledge, and expertise which is the foundation of our organization."

Kristina L. Swallow, P.E., ENV SP, F.ASCE, is a program manager for the city of Las Vegas. She

oversees a team of engineers responsible for delivering Las Vegas public-works projects and sanitary sewer collection system planning. Previously, she worked in the office of Sen. Tom

Udall (D-NM), from 2009-2012. Active in ASCE for more than two decades, Swallow serves as the Utility Engineering and Surveying Institute's first Governor and is a member of the Transportation Policy Committee. Among many roles, she served as Region 8 Director from 2012-2015, and Region 8 Governor from 2005-2008.

In her vision statement, Swallow emphasized how ASCE needs to continue taking a big-picture approach to achieving the tenets of Vision 2025: "To be leaders shaping public policy and our communities, we need to regain our position as technical advisers and key influencers. What will it take to achieve our vision and be the global leaders we aspire to? We need to be aligned in our purpose, work together, and change the conversation."



FREE WEBINAR - GEOSYNTHETIC CLAY LINERS

What: Free Webinar - 1.5 PDH

When: Mon., Feb. 22, 2016
11:30 AM - 1:00 PM

Where: S&ME
6190 Enterprise Ct.
Dublin OH 43016

Topic: Selected Topics Regarding Geosynthetic Clay Liners

RSVP: To Jason Ross at JDross@smeinc.com by Wed. Feb 17, 2015.

*Open only to Central Ohio ASCE Section Members.

*Seating is limited to the first 25 people.

*Bring your own lunch.



Purpose and Background

Geosynthetic clay liners (GCLs) are very thin layers of bentonite sandwiched between two geotextiles and then needle-punched or stitch-bonded together to form a barrier to liquids and gases. They first appeared in 1986 to absorb leakage through overlying geomembranes in landfill liner systems. Currently, they are being used for both liner and cover systems in myriad environmental, transportation, hydraulic and private development applications. There are approximately twenty manufacturers and the worldwide annual usage is about 150 million square meters. That said, the acceptance and use of GCL's by geotechnical engineers has not progressed nearly as rapidly as it has with other geosynthetic materials like geomembranes, geogrids, etc. This webinar presents the most relevant topics/aspects involving GCLs, including cases of inadequacies in the areas of shear strength and hydraulic conductivity. The webinar also covers the most current GCL testing protocols. In that light, the webinar offers a point-and-counterpoint of GCLs vs. CCLs in both liners and covers. It describes a generic specification with not only suggested limiting test values but also recommendations on quality control and quality assurance.

Primary Topics of Discussion

- Brief History of GCLs
- Cases of Inadequate Shear Strength
- Shear Strength and Peak vs. Residual Decisions
- Tension Peel Strength
- GCL External Interfaces

- Cases of Inadequate Hydraulic Conductivity
- Flow Through GCL Overlaps
- GCL Panel Separation
- GCLs vs. CCLs in Liners and Covers
- The GRI-GCL3 Specification

Learning Outcomes

- Discover the history and manufacturing of GCLs
- Learn about field cases of inadequate shear strength
- Understand testing and critical details of shear testing
- Discuss field cases of inadequate hydraulic conductivity
- Explore critical details of hydraulic conductivity testing
- Become familiar with point-and-counterpoint of GCLs vs. CCLs in both liners and covers
- Emerging GCL opportunities
- Generic specification for GCLs

Webinar Benefits

- Understanding of GCL strengths and weaknesses
- Learn the distinctions of using GCL's as liners vs. covers
- Learn about current research and testing of GCLs
- Understand the distinctions between GCLs and CCLs in liner and cover systems
- Hear about new GCL uses and a generic specification

Webinar Outline

- Shear strength issues and testing
- Hydraulic conductivity issues and testing
- GCL's vs. CCL's in liner and cover systems
- Emerging GCL's opportunities
- GCL generic specification

The Central Ohio Section sponsors free continuing education webinars as a service to our members. These webinars are produced by ASCE and normally cost \$250 or \$300 for ASCE members. However, the Section is paying the registration fee and inviting any interested section members to attend for free. You can see [the complete list of webinars available from ASCE National on their website](#). If you see one you like, let us know. If you and your company would like to host one, let us know that too. If you open it up to any interested Central Ohio ASCE section members to come, we will pay the registration fee.

2016 OHIO CONSTRUCTION CONFERENCE

What: Ohio Construction Conference

When: Wed., March 16, 2016

Where: The Ohio Union - 1739 North High St.

Save the date for the 2016 Ohio Construction Conference,



presented by McGraw Hill Construction and The Builders

Exchange of Central Ohio. The conference will bring together a unique mix of industry leaders in the commercial construction community - representing owners and facility managers, architects and engineers, contractors and subcontractors, and industry suppliers in a constructive, collaborative conference aimed to benefit each component of a project team.

For additional information, click [HERE](#).

FREE WEBINAR - GEOTECHNICAL STUDIES IN KARST

What: Free Webinar - 1.5 PDH

When: Fri., March 11, 2016
11:30 AM - 1:00 PM

Where: S&ME
6190 Enterprise Ct.
Dublin OH 43016

Topic: Geotechnical Investigations in Karst

RSVP: To Chris Nye at CNye@smeinc.com by Mon.
March 7, 2015.

*Open only to Central Ohio ASCE Section Members.

*Seating is limited to the first 25 people.

*Bring your own lunch.



Purpose and Background

Carbonate and evaporite geologic formations underlie a large portion of the world. These formations contain soluble compounds that result in portions of the formations dissolving over time to produce cavities, conduits, enlarged joints, caves, etc. The landforms resulting from these features are referred to as karst. Karst poses many geotechnical concerns such as subsidence, sinkholes, uneven structural support, high groundwater production, and groundwater sensitivity to contamination.

Locating and characterizing karst features at depth is a challenging task. Even large features can easily be missed by conventional borings and may not be detectable by some geophysical methods. This makes it necessary to employ a specially focused investigation that incorporates geological, geotechnical, statistical, and geophysical approaches to evaluate risks and determine the appropriate level of investigation.

This presentation includes a brief introduction to karst and the associated geotechnical issues. The instructor discusses and provides examples of methods and strategies for investigating and characterizing various aspects of karst.

Primary Discussion Topics

- Geotechnical issues in karst
- Geologic associations of karst features
- Applications and limitations of various methods for investigating in karst
- Integrated approach to investigation

Learning Outcomes

- Develop an understanding of the interaction of natural distribution of karst features
- Learn the key factors and limitations of borings and geophysics in karst
- Develop an understanding of the mechanics of how to integrate results of different investigation techniques

Webinar Benefits

- Learn a comprehensive approach for effective investigation of karst
- Learn to find the limitations of investigation methods for more effective use
- Avoid costly errors from misinterpretation and use of inappropriate investigation methods
- Find out how to implement the latest approaches to investigating karst
- Learn the latest technology to effectively investigate karst

Webinar Outline

- Introduction to karst
- Geotechnical issues in karst
- Geology and the structure of karst
- Borings
- Geophysics
- Integration of methods
- Example cases

2016 FUTURE CITY COMPETITION

The Central Ohio section has long been a judge and supporter of the Future City Competition, and did so again in 2016. ASCE sponsors the "Best Infrastructure" award as part of the competition. The 2016 competition was held on January 16, 2016 at Columbus State Community College. Teams from 13 Ohio middle schools competed with custom built models of their future cities, complete with moving rockets, lights, flowing water, and more. The teams design a city using SimCity software and construct a scale model to illustrate how their city will function. Teams also prepare an essay with oral presentation to summarize their model and design.

The Top prize was awarded to Genoa Middle School of Westerville. The 11 team members will now travel to Washington, D.C. To participate in the national finals from Febru-

ary 12-17 during National Engineer's Week. Lakewood Local Middle School from Hebron finished in fifth place.



FREE WEBINAR - DESIGNING SEPARATED BIKEWAYS

What: Free Webinar - 1.5 PDH

When: Wed., March 9, 2016
11:30 AM - 1:00 PM

Where: Burgess & Niple
5085 Reed Road
Columbus OH 43220

Topic: Designing and Implementing Separated Bikeways

RSVP: To Brooks Vogel at brooks.vogel@korda.com by
Fri. March 4, 2015.

*Open only to Central Ohio ASCE Section Members.

*Seating is limited to the first 25 people.

*Bring your own lunch.



Purpose and Background

Recent advances in bicycle facility design guidance have led to increased demand from government agencies and the public to implement many of these innovative treatments. As more of these facilities are being implemented, users are recognizing the host of safety benefits and greater comfort level generated from the increased separation from automobile traffic and enhanced intersection treatments. Agencies throughout the country are using the design guidance recently issued within the National Association of City Transportation Officials Urban Bikeway Design Manual in association with the guidance set forth in the established US manuals such as the AASHTO Guide for the Development of Bicycle Facilities and MUTCD to implement these facilities.

This webinar familiarizes transportation engineers/planners with the newest innovations in the planning, design, and maintenance of these separated bikeways. The course discusses recent developments in available design guidance, considerations when designing and implementing these facilities, and design treatments to address common and unique situations.

Primary Discussion Topics

- Reasons for separate bikeways
- Past and ongoing research into separated bikeways
- Current approved standards and reference material
- Origins of new design standards

- Different types of separated bikeways/treatments
- Determining where and when to apply these treatments
- Considerations when designing and implementing these facilities/treatments
- Locations where these facilities have been implemented

Learning Outcomes

- Become familiar with the latest innovations in design
- Demonstrate understanding of available design resources
- Know how to apply design resources and their limitations
- Understand the federal approval status on the treatments
- Be able to assess the feasibility for implementation
- Understand the various design considerations

Webinar Benefits

- Learn about the latest advances in planning and design
- Discover how to choose the right type of bicycle facility
- Learn how to design for safer and more comfortable bikeways
- Explore common design/implementation mistakes
- Discuss different pavement marking materials
- Find out about the different bikeway separation elements
- Learn about the appropriate intersection treatments and where to apply

Webinar Outline

- Overview of separated bikeways
- Discuss need for enhanced bicycle facilities
- Origin of newer/innovative design guidance
- Types of separated bikeways/Intersection treatments
- Determining where and when to apply corridor and intersection treatment
- Review of Design considerations/Lessons Learned
- Implementation examples
- Conclusions
- Questions

FREE ON-DEMAND WEBINARS

As a benefit to members, in 2016 ASCE is offering five free, on-demand webinars good for one PDH each. You may choose up to 5 webinars from the 60 on-demand webinars



listed [HERE](#). Each one is a 1-hour webinar worth 1 PDH. That's 5 free PDHs from our comprehensive continuing education library –

just for being a member! Categories include *Environmental, Geotechnical, Hydraulics and Water Resources, Management and Practice, Structural, and Transportation*.

Not a member? Join online or call Customer Service at 800-548-ASCE (2723) or 703-295-6300, Monday-Friday, 9:00 a.m. – 6:00 p.m., ET to take advantage of this exclusive member benefit.

Webinars must be taken by December 31, 2016

2015-2016 CENTRAL OHIO ASCE MEETINGS

Meeting Date	Topic	Group(s)	Location	Coordinator
Thursday Feb. 25, 2016 Lunch	Engineers Week Building a World Record Breaking Roller Coaster	ALL	Villa Milano	E-week Committee
Thursday March 17, 2016 Lunch	Insight 2050 (MORPC)	ASCE	Crowne Plaza North	Carlos Vazquez
Thursday April 14 or 21, 2016 Dinner	OU/OSU Student Chapter Presentations	ASCE	Athens, OH	OSU/OU Student Chapters
Wednesday April 20, 2016 All Day	ASCE Spring Seminar - Water Quality	ASCE	OSU Fawcett Center	Firat Sever
Thursday May 19, 2016 Lunch	Awards President-Elect Mattei "Initiatives & Raise the Bar"	ASCE	T.B.D.	Carlos Vazquez/ AJ Smith
June, 2016 Dinner	2016-2017 Planning Meeting	All	Tommy's Pizza - Dublin, OH	Chris Nye
Friday June 17, 2016 Lunch & Dinner	Annual Golf Outing	ASCE	Darby Creek Golf Club	Jim Pajk

CIVIL ENGINEERING REFERENCE BOOKS

The Central Ohio Section bought a number of civil engineering reference books and donated them to the Columbus Main Library for public use. The titles are as follows:

- Minimum Design Loads (7-10)
- Design of Marine Facilities for Berthing, Mooring
- FRP Composite Connections
- Foundation Engineering Handbook
- Trenchless Technology Piping
- Civil Engineer's Handbook of Professional Practice

- Building Code Requirements and Specification for Masonry Structures (5-11 & 6-11)
- Urban Stormwater Controls
- Municipal Wastewater Plants
- Structural Steel Designer's Handbook



The books are for reference and can't be checked out. They are located on the 3rd floor in a special collection area of the main library (north side of building in the half-height stacks).

KEEP UP TO DATE

Join Our E-Mail List!

Stay up to date with current news - go to <http://centralohioasce.com/e-mail>.

Web: www.centralohioasce.com

E-Mail: asce@centralohioasce.com

BOARD MEETING

Our Next Board Meeting
Will Be 11:30 A.M.
February 18, 2016
At W.D. Partners

DREAM BIG! IMAX MOVIE



All around the world, engineers are pushing the limits of ingenuity and innovation in unexpected, imaginative and amazing ways. Dream Big will take viewers on a journey of discovery from the world's tallest building to a bridge higher than the clouds and a tunnel deep below the earth. Along the way the audience will witness how today's engineers are shaping the world of tomorrow.

Dream Big recently moved into full production thanks to the Bechtel Corporation, which has signed on as the film's presenting sponsor. The film will take advantage of the awe-inspiring scope of giant-screen theaters including IMAX to show how engineers have made civilization possible, and to encourage youth to make it a career. ASCE is working with award-winning documentary filmmakers MacGillivray Freeman on the production and associated educational materials. Dream Big will have its world premiere during Engineers Week in February 2017. Click [HERE](#) for a preview.

OUR PROFESSIONAL SPONSORS

Thank

You!

ms consultants, inc.
engineers, architects, planners

Innovative, Cost-Effective, Comprehensive Solutions

Architecture + Building Design	Energy Infrastructure	Parks + Recreation	Sustainable Design	Water Resources
Construction Services	Finance + Economic Development	Planning + Program Management	Transportation Solutions	Water/Wastewater Systems

www.msconsultants.com [f](#) [t](#) [in](#)

Exclusively Ohio

CARPENTER MARTY *transportation*

Bridge • Roadway • Survey • Traffic

6612 Singletree Drive Columbus, Ohio 43229
www.cmtm.com • 614.656.3424

SPENCE
Environmental Consulting, Inc.

- Environmental Assessment & Remediation
- BUSTR Corrective Action
- Groundwater Monitoring
- Geotechnical Engineering
- Environmental Compliance & Permitting

70 West Columbus Street, Pickerington, OH 43147
ph: 614.837.4750 www.SpenceEnv.com

WOOLPERT

Road Tested | Future Driven

Experienced Professionals
Design Expertise
Advanced Technology

woolpert.com 800.414.1045

Put Your Ad Here

Business Card Ad
\$175 / year

Double Business Card Ad
\$350 / year

To purchase a newsletter ad, email your request to newsletter@centralohioasce.com

KORDA www.korda.com

Site Development | Transportation | Public Works | Surveying

Engineering • Planning • Architecture
Environmental • Surveys • Transportation

In Ohio, call (614) 486-4383

Stantec

One Team. Infinite Solutions.

Authentic & Intentional

Mead & Hunt

Engineering | Architecture | Aviation
Construction Services | Historic Preservation
Planning Development | Survey

614-792-5900 | meadhunt.com

E.L. ROBINSON ENGINEERING

A Full Service Civil Engineering Firm

Highway • Bridges • Geotechnical • Hydraulics • Oil & Natural Gas • Construction Administration

Columbus 614.586.0642
Cleveland 216.452.1890

www.elrobinsonengineering.com

EMPLOYMENT OPPORTUNITIES

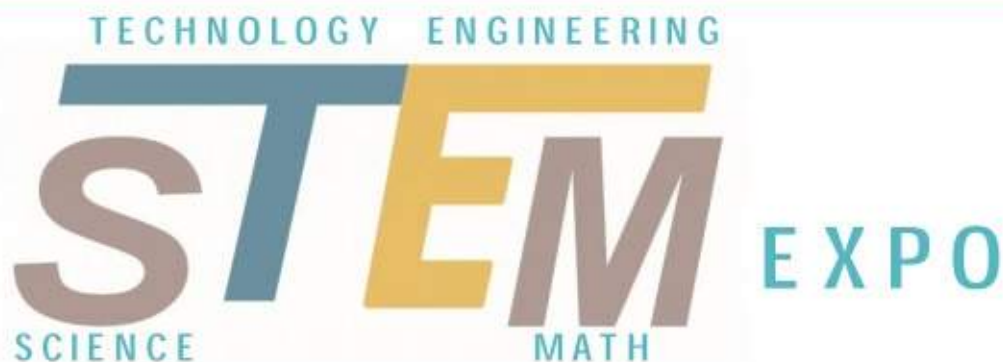
As a service to our members and colleagues who may be seeking employment opportunities, we have provided links directly to *Human Resources* or *Careers* pages on the company website below. Please click any of the company logos to visit the site. We thank the companies below for their support of the Central Ohio Section of ASCE.

The ASCE National website also provides employment assistance with hundreds of job postings and additional resources. Please click the image to the right to visit the webpage.

OUR PROFESSIONAL SPONSORS

Thank You!

2016



2016 CENTRAL OHIO STEM EXPO

SATURDAY, MARCH 5, 2016 9 AM—1 PM

**THOMAS WORTHINGTON HIGH SCHOOL
300 W. GRANVILLE ROAD, WORTHINGTON, OHIO**

The Central Ohio STEM Expo is a free educational outreach event for students grades K through 8 that will feature fun, interactive activities and exhibits in the Science, Technology, Engineering and Math fields. Last year's student participants built truss bridges and straw towers, met a live tortoise, modeled buildings under earthquake loading, explored magnetism, looked at real blueprints, built race cars out of everyday food items, and interacted with numerous other activities and exhibits.

Pre-Registration

Please visit the event webpage at <http://centralohioasce.com/STEM-Expo> to RSVP for this event. Pre-registration is encouraged but registration will also be available the day of the event. The first 150 students through the door will receive a free take-home activity bag.

Platinum Sponsor



Gold Sponsors



Stantec

Silver Sponsors



GEOTECHNICAL
CONSULTANTS INC.



WSP

PARSONS
BRINCKERHOFF

Spring Seminar - Water Quality

Water Quality SEMINAR

Various Speakers from:

City of Columbus, OEPA, City of Delaware,
Consultants

Water Quality remains to be a hot topic in Ohio with algal blooms in surface waters as well as issues with drinking water quality. What can we do to improve our waters? Learn from knowledgeable speakers about HABs, water/wastewater treatment, resource recovery, groundwater, stormwater BMPs, drinking water quality and more!

Who should attend? Engineers, designers, managers, operators, regulatory professionals, construction managers, and others interested in learning more about current practices regarding water quality.

Speakers

Speakers include representatives from:

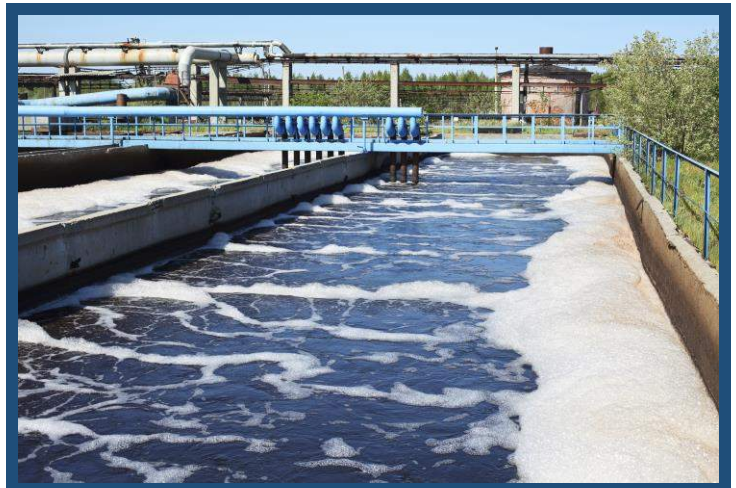
- Ohio Environmental Protection Agency (OEPA)
- City of Columbus, Division of Sewerage and Drainage (DOSD)
- Ohio State University (OSU)
- City of Columbus, Division of Water (DOW)
- City of Delaware
- American Structurepoint
- MWH
- Stantec



Seminar Includes:

- Course Reference Materials
- Certificate for Professional Development Hours
- Breakfast, Lunch, and Two Refreshment Breaks

Format: One Day Seminar, Business Casual Attire



Registration

One registrant per form. Please duplicate this form for additional registrants.

ASCE Members: \$ 115.00
 Non-Members: \$ 165.00
 Students: \$ 30.00
 Registration after April 1, 2016: \$ 200.00

Fee includes morning breakfast, lunch, break refreshments, and parking.

The preferred method of payment is online at www.centralohioasce.com/seminar by April 14, 2016. Any Checks should be made payable to *Central Ohio ASCE*.

Please register and pay [online](#) with a credit card. **Registration at the regular fee is due by 4 PM on Friday, April 1, 2016.** Registration fees will still be required for no-shows and registrants canceling after April 15, 2016.

Make checks payable to: *Central Ohio ASCE*

Firat Sever, American Structurepoint.
 2550 Corporate Exchange Drive, Columbus, OH 43231
 Telephone: (614) 901-2235
fsever@structurepoint.com

Name _____

Company _____

Address _____

City _____

State _____ Zip _____

Phone _____

e-mail _____

Lunch will be buffet style. Please specify preference or any special dietary needs.



Seminar Program

(subject to change)

7:30 - 8:00	Registration / Breakfast	12:00 – 1:00	Lunch
8:00 - 8:15	Welcome / Introduction <i>Firat Sever, ASCE / Central Ohio</i>	1:00 - 1:40	Use of Ultrasound for Environmental Applications <i>Linda Weavers, OSU</i>
8:15 - 9:00	Upgrades Regarding Ohio EPA's Plan for Nutrient Pollution Control <i>Dan Dudley, OEPA</i>	1:40 – 2:40	Lake Erie Isn't the Only One Facing Water Quality Challenges <i>Matt Steele and Rod Dunn, City of Columbus, DOW</i>
9:00 - 9:30	Introduction to Nutrient Removal at Ohio's Municipal Improvements Project <i>Dale Kocarek, Stantec</i>	2:40 – 2:55	Break
9:30 - 9:45	Break	2:55 – 3:25	City of Delaware Water Treatment Plant Expansion and Improvements Project <i>Brad Stanton, City of Delaware</i>
9:45 - 10:15	Green Technology to Recover Phosphorous at WWTPs <i>Viraj deSilva, American Structurepoint</i>	3:25 – 3:55	Today's Water Treatments Challenges <i>Tim Wolfe, MWH</i>
10:15 - 11:00	Columbus Has Gone Green! <i>Tim Fallara, City of Columbus, DOSD</i> <i>Eric Onderak, AECOM</i> <i>Steven Thompson, AECOM</i> <i>Jacob Slechter, City of Columbus, Div. of Cons. Ins.</i> <i>Scott Compston, City of Columbus, Div. of Cons. Ins.</i>	3:55 – 4:15	Drinking Water Harmful Algal Blooms in Ohio <i>TBD, OEPA</i>
11:00 - 11:30	Construction Stormwater Permitting in Ohio <i>Mike Joseph, OEPA</i>	4:15 – 4:35	Ambient Groundwater Quality in Ohio <i>Chris Kenah, OEPA</i>
11:30 - 12:00	Columbus Southerly WWTP – Planning for the Future <i>Rick Kent, City of Columbus, DPU</i>	4:35 – 4:45	Closing Remarks <i>Firat Sever, ASCE / Central Ohio</i>

Directions and Map

DIRECTIONS TO THE EVENT:

The Fawcett Center

2400 Olentangy River Road

Columbus, OH 43210

Phone: (614) 292-1342

From the West:

Take I-70 East to State Route 315 North. Follow to the Lane Avenue Exit. Turn right on Lane Avenue and turn left on Olentangy River Road. The Fawcett Center is the first driveway on the right.

From the East:

Take 670 West to State Route 315 North. Follow to the Lane Avenue Exit. Turn right on Lane Avenue and turn left on Olentangy River Road. The Fawcett Center is the first driveway on the right.

From the North:

Take either I-71 or State Route 23 South to I-270 West. Take I-270 West to State Route 315 North. Follow to the Lane Avenue Exit. Turn right on Lane Avenue and turn left on Olentangy River Road. The Fawcett Center is the first driveway on the right.

From the South:

Take either I-71 North to State Route 315 North, OR State Route 23 North to I-270 West to State Route 315 North. Follow to the Lane Avenue Exit. Turn right on Lane Avenue and turn left on Olentangy River Road. The Fawcett Center is the first driveway on the right.



**A PARKING PERMIT WILL BE PROVIDED
UPON REGISTRATION**