

ASCE Newsletter

Central Ohio Section

December, 2011
Volume 16, Issue 4

CONTENT

President's Letter 2

Latest News 2-4

Calendar of Events 4

Newsletter Ads 5-6

Pay Securely
Online On Our
Web Site



DECEMBER DINNER MEETING

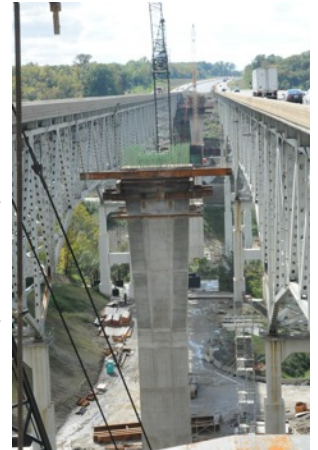
Date/Time: Thursday, December 15, 2011 - 5:30 P.M. - Registration - 6:30 P.M. - Dinner

Location: Arlington Cafe – 1975 Henderson Road - Columbus, OH 43220

Speakers: Ryan Cocco - Project Engineer, Kokosing Construction
Murat Aydemir, PE, SE - Project Engineer, HNTB Corp.
Jeff Raussen - Sales Manager, Spurlino Materials

Topic: Replacement of the Jeremiah Morrow Bridge

The Jeremiah Morrow bridge, carrying Interstate 71 over the Little Miami River near Lebanon, Ohio is being replaced with an all-concrete, segmental, cast-in-place bridge using the balanced cantilever method with form travelers. The Jeremiah Morrow bridge, named after Ohio's ninth Governor, is the highest bridge in Ohio at 240 feet, and also one of the longest at 2,230 feet. The existing twin steel deck trusses were built in 1964 and 1965 at a cost of \$5 million. The existing bridges are being replaced in two phases, with the first of the two twin bridges currently being constructed in the median between the existing bridges. At 30 feet wide, the existing bridges are very narrow; the new bridges will each be 55 feet wide with provisions of three lanes of traffic in each direction. The new bridges will cost \$88.1 million. HNTB Corp. Cleveland is the designer, and Kokosing Construction is the contractor.



Time: 5:30 P.M. - "Attitude Adjustment" and registration begins (cash bar)
6:30 P.M. - Dinner Buffet Begins
7:30 P.M. - Program Begins

CPD Hours: A certificate for one (1) Continuing Professional Development (CPD) hour will be issued at the conclusion of the program.

RSVP: **Registration is due by 5:00 PM on Tuesday, December 13, 2011.** Late registrations and walk-ins may not be accepted. Registration fees may still be required for no-shows and registrants canceling after December 13, 2011. Register and pay [online](#) with a credit card, or you may also contact Adam Rich at (614) 918-2476, or register@centralohioasce.com.

Cost: \$25 ASCE/ACI Members - \$35 Non-members

Payment: The preferred method of payment is [online](#) before December 13, 2011 or on the day of the event by cash or check. If you need to pay for multiple registrations, please pay by check. Checks should be made payable to Central Ohio ASCE.

2011 - 2012 BOARD OF DIRECTORS

PRESIDENT
Michael Mazzoli
(614) 876-8000

1ST VICE PRESIDENT
Adam Rich
(614) 218-0686

2ND VICE PRESIDENT
Mark Seidelmann
(614) 486-4383

TREASURER
Michael Navabi
(614) 839-0379

**MEMBER-AT-LARGE /
NEWSLETTER EDITOR**
Brooks Vogel
(614) 487-1650

SECRETARY
Carlos Vazquez
(614) 634-7132

WEB SITE EDITOR
Peter Narsavage
(614) 432-4030

LETTER FROM THE PRESIDENT

In November our luncheon meeting was held at the Grange Insurance Audubon Center where it was a pleasure to hear the speakers Michael Bongiorno of DesignGroup and Ryan Hoffman of Heapy Engineering discuss the innovative design strategies of the structure and its surroundings. They did an excellent job at presenting what key factors were taken into consideration for the Center to meet the LEED Gold certification. I would like to thank Devon Seal of OSPE for helping coordinate the speakers and Michael Bongiorno and Ryan Hoffman for providing the group such an informative presentation and tour of the facility. For those that have not been to the Grange Insurance Audubon Center, this is a wonderful facility that provides the opportunity to observe a nature preserve in a metro downtown setting. For more information about the Center please visit www.grange.audubon.org.

Our upcoming December meeting will be held at the Arlington Café and Bar located at 1975 Henderson Road in Columbus. This joint event will be a dinner meeting sponsored by ASCE and ACI which will discuss the replacement of the Jeremiah Morrow Bridge project which carries I-71 over the Little Miami River near Lebanon, Ohio. The existing Jeremiah Morrow Bridge is one of Ohio's highest (240 feet) and the longest (2,230 feet)

bridges. This twin steel deck truss structure was built in 1964-1965 for a cost of \$5 million. The new structure will be a concrete segmental bridge with an estimated cost of \$88.1 million. Please join us in December at this event for the presentations of Ryan Cocco of Kokosing, Murat Aydemir of HNTB and Jeff Raussen of Spurlino Materials. Those who attend will receive a certificate for one (1) Continuing Professional Development (CPD) hour.

Throughout the year, the ASCE Central Ohio Section provides continuing education opportunities for professionals in Central Ohio on a monthly basis. This spring we will be having our annual Spring Technical Seminar, please follow our website and future emails that will provide further details. For those of you that are not familiar with this outstanding opportunity, the Spring Technical Seminar is a one day event held locally that will help provide technical training and up to 6-8 hours of CPD's for those that attend.

Happy Holidays!

Michael Mazzoli

President@CentralOhioASCE.com

2012 FEDERAL TRANSPORTATION BILL

More projects will proceed now that 2012 funding is finalized.

Following recently passed legislation, the USDOT will be funded through September 30, 2012, and all other federal agencies through December 16. The bill, packaged with the Agriculture, and Commerce-State-Justice spending bills, passed the House (298-121) and the Senate (70-30). Highlights and funding amounts of the bill include:

- Federal Highways: \$41.5 billion (a slight reduction from current levels, but much higher than the \$27 billion originally proposed by the House).
- Federal Transit: \$10.6 billion (about \$311 more than current levels).
- New Starts/Small Starts capital program: \$1.9 billion.

- TIGER program: \$500 million (\$27 million less than current levels).
- National Infrastructure Bank: \$0 funding. (The White House had requested \$5 billion).
- Amtrak: \$1.4 billion (includes \$681 million for capital improvements).
- High Speed Passenger Rail: \$0 funding. (The House proposed \$0, the Senate proposed \$100 million, the President requested \$1 billion).
- \$3.35 billion for the airport improvement program (a decrease of \$165 million)
- HUD Sustainable Communities Initiative: \$0. The Senate proposed \$90 million, the House \$0.
- Federal Aviation Administration: \$12.5 billion.

LICHTENSTEIN DISTINGUISHED LECTURE

THE LIMITS OF THE TALLEST BUILDING AND THE LONGEST BRIDGE

Date: Friday, February 3, 2012
 Time: 3:30 PM
 Location: The Ohio State University
 Robert Smith Seminar Room
 Physics Research Building
 191 W. Woodruff Ave.
 Columbus, OH 43210

Born in Switzerland and a graduate of the City College of New York, Mr. Matthys Levy received his MS and CE degrees from Columbia University. He is the recipient of the ASCE Innovation in Civil Engineering Award and three PCI awards. He was named a Structural Engineering Legend in Design by Structural Engineering Magazine in 2003. He is the co-author of the best selling book, *Why Buildings Fall Down*, as well as, *Structural Design in Architecture; Why the Earth Quakes; Earthquakes, Volcanoes & Tsunamis;* and *Earthquake Games and Engineering the City*. His recent book, *Why the Wind Blows, a history of weather and global warming*, was published in 2007. He was the principal designer for many projects including the



Javits Convention Center and the Georgia Dome in Atlanta, and a cable-stayed pedestrian bridge at Rockefeller University. He is the inventor of the Tenstar Dome structure, a unique tensegrity cable dome used to cover large spaces with minimal obstruction. Mr. Levy has served as an expert in forensic investigations including the World Trade Center Collapses in New York. He was elected to the National Academy of Engineering in 1996.

Ever since the late nineteenth century, structures have been built higher and bridges have spanned further. In 1939 when I arrived in the United States, New York could boast having the world's tallest skyscraper, the Empire State Building, and San Francisco the world's longest suspension bridge, the Golden Gate Bridge. After the Second World War, these records would soon tumble as longer and taller structures would be planned and built until here we are in the twenty-first century with Dubai's Burj Khalifa tower scraping the clouds at 828 m high and the planned Stretto di Messina Bridge jumping 5070 m across the strait separating Sicily from the Italian mainland. Have we reached too high and too far in our quest for sheer size? Have we reached the technological limit of how high we can build or how far we can span? What about Frank Lloyd Wright's mile high tower and the tempting Strait of Gibraltar waiting to join Europe to Africa. I propose to explore the limits that technology presents us in this quest and whether there are socio-economic constraints that may outweigh mere physical limits.

ASCE news ONLINE PUBLICATION



Beginning with January's edition, *ASCE News - The Newspaper for Members of the American Society of Civil Engineers*, will be published in a digital format only, part of ASCE's commitment to sustainability and fiscal responsibility.

The digital edition will be "published" and made available for viewing and download by ASCE members each mid-month, at the same time the print editions arrived in the mail. The high quality online magazine loads quickly, can be

expanded and customized to best fit your monitor, and viewing preferences tailored for easy reading. The document can also be printed for convenience.

The November 2011 edition of *ASCE News*, which will match the hardcopy to be mailed, can be viewed electronically by clicking [HERE](#). This November edition is in the same format as the digital-only editions that will appear starting in January, 2012.

By discontinuing the newspaper's print edition, ASCE furthers its commitment to sustainable publishing, reduces printing and mailing costs, and continues to advance its electronic publishing efforts.

2011 - 2012 CENTRAL OHIO ASCE MEETINGS

Meeting Date	Topic	Location	Coordinator
Thursday, December 15, 2011 Dinner	I-71 Jeremiah Morrow Bridge	Arlington Cafe	Dane Redinger (ACI)
Thursday, January 12, 2012 Dinner	Caisson Case Study	Winking Lizard	Carrie Bremer (SEAOO)
Thursday, February 23, 2012 Lunch	NASA! (Engineering Week)	Bridgewater Conference Center	Engineering Week Organizing Committee
Tuesday, March 27, 2012 Lunch	Dodridge Street Bridge	OSU Fawcett Center	Scott Roe (FCEO)
Thursday, April 19, 2012 Lunch	T.B.D.	OSU	Dr. Carolyn Merry (OSU)
Thursday, May 17, 2012 Lunch	ASCE President Elect	OSU Faculty Club	Bob Redfield (ASCE)
June, 2012	Planning Meeting	T.B.D.	Michael Navabi (ASCE)
Friday, June, 2012	Annual Golf Outing	Darby Creek Golf Club	Jim Pajk (ASCE)

ASCE CONTINUING EDUCATION

ASCE Geographic Services is pleased to provide Continuing Education seminars and workshops. These in-depth, practice-oriented programs are produced by ASCE's Continuing Education Department.

- Jan. 19-20, 2012 Chicago [Earthquake Induced Ground Motions ~Newly Updated](#)
- Feb. 9-10, 2012 Chicago [Pumping Systems Design for Civil Engineers](#)
- Feb. 23-24, 2012 Minneapolis [Progressive Collapse Mitigation: Practical Analysis Methods and Proven Solutions](#)
- March 7-9, 2012 Chicago [HEC-RAS Computer Workshop for Unsteady Flow Applications](#)
- March 29-30, 2012 Minneapolis [Introduction to Dam and Levee Safety, Evaluation and Rehabilitation](#)
- March 29-30, 2012 Chicago [Seismic Design and Performance of Building Structures](#)

KEEP UP TO DATE

Join Our E-Mail List!
 Stay up to date with current news - go to <http://centralohioasce.com/e-mail> .
Web: www.centralohioasce.com
E-Mail: asce@centralohioasce.com

BOARD MEETING

*Our Next Board Meeting Will Be January 5, 2012.
 4960 Vulcan Avenue
 Columbus, Ohio 43228*



ASCE

American Society of Civil Engineers
Central Ohio Section



90th
ANNIVERSARY
★
1921 - 2011

OUR PROFESSIONAL SPONSORS

Thank You

Put Your Ad Here
Business Card Ad
 \$175 / year
Double Business Card Ad
 \$350 / year
 To purchase a newsletter ad, contact Mike Mazzoli at (614) 876-8000.



A Minority, Woman-Owned Small Business
www.primeeng.com

Corporate Headquarters
 3000 Corporate Exchange Drive, Suite 600
 Columbus, Ohio 43231
 P 614 839 0250

Architectural Services
 Structural Engineering
 Civil | Water | Waste Water
 Transportation Engineering
 Construction Management
 Construction Inspection
 Materials Testing


OHIO | CONNECTICUT | MARYLAND | TEXAS

27 offices throughout the Southeast and Midwest



S&ME

EXPANDING OUR EXPERTISE
BBCM Joins S&ME
 Columbus, Cleveland and Cincinnati
Office 614-793-2226 www.smeinc.com



Jones-Stuckey Ltd., Inc.

Highways • Bridges
 Civil/Site • Sewers • Waterlines
 Recreation • Parks • Environmental
 Studies • Construction Administration

Columbus 614.486.0401 Akron 330.620.8271
 Civil • Structural Engineers

www.jonesstuckey.com



Grumman Exploration, Inc.
*Near-surface Geophysics,
 Non-destructive Subsurface Exploration*

Services

- Ground-Penetrating Radar
- Electrical Resistivity Imaging
- Electromagnetic Profiling
- Seismic Testing
- Magnetometry

“Look before you dig”

(614) 488-7860
www.GrummanExploration.com
info@GrummanExploration.com

INNOVATIVE ENGINEERING

GIS ■ Planning ■ Geotechnical ■ Design/Build
 Environmental ■ Transportation ■ Water Resources
 Program Management ■ Construction Services



Gannett Fleming
A Tradition of Excellence
www.gannettfleming.com

Columbus, OH ■ Phone: (614) 794-9424
 Akron, OH ■ Phone: (330) 668-8800 **ISO 9001:2008 CERTIFIED**



RIVER CONSULTING

A Leading Mid-Major A/E to Global Energy, Food, Process and Industrial Clients.

We design some of the most challenging steel and concrete structures for clients around the globe. Visit our website for examples of our projects.

445 Hutchinson Ave., Suite 740
 Columbus, Ohio 43235 www.riverconsulting.com



Urban Revitalization | Waste Management | Energy | Environmental

Solving complex challenges related to land, energy and the environment.

Hull can help!
 Contact 614.793.8777
www.hullinc.com

Hull
 & Associates, Inc.

OUR PROFESSIONAL SPONSORS

Thank You



ms consultants, inc.
engineers, architects, planners

2221 Schrock Road
Columbus, Ohio 43229-1547
614.898.7100
info@msconsultants.com
www.msconsultants.com

Offices in Ohio, Indiana, Pennsylvania, West Virginia & North Carolina



STRUCTURAL ENGINEERING

1166 Dublin Road, Suite 200
Columbus, Ohio 43215-1038

T 614 481-9800
F 614 481-9353

www.smbhinc.com



SPENCE
Environmental
Consulting, Inc.

- Environmental Assessments
- Geotechnical Engineering
- Site Remediation
- Regulatory Compliance

(614) 837-4750
www.spenceenv.com

Engineering • Planning • Architecture
Environmental • Surveys • Transportation

In Ohio, call
(614) 486-4383



One Team. Infinite Solutions.

Steven Schaefer Associates, Inc.

Cincinnati • Columbus



Consulting Structural Engineers

815 Grandview Ave
Suite 250
Columbus, Ohio 43215
www.ssastructural.com

Phone: 614-428-4400
Fax: 614-428-4500

KORDA

IMAGINE • CHALLENGE • INNOVATE • CREATE

Columbus office

tel: +1 614.487.1650
fax: +1 614.487.8981
web: www.korda.com
email: columbus@korda.com

1650 Watermark Drive Suite 200 | Columbus, Ohio 43215

Site Development | Transportation | Public Works | Surveying